

## USB uEye® LE Installation

Housing version



Housing and board-level version



### Manuals

For detailed information on this model and the software please go to "Programs > IDS > uEye > Help" after the installation on your PC or go to "Support > Manuals" on our website [www.ids-imaging.com](http://www.ids-imaging.com).

### Get support

[support@ids-imaging.com](mailto:support@ids-imaging.com)

IDS Imaging Development Systems GmbH  
Dimbacher Strasse 6-8  
74182 Obersulm, Germany



### Important Product Information



#### Attention!

The digital input of the **board-level camera** is **not** potential-free and has **no** protective circuits. We do not accept any liability for any defects that are caused by faulty wiring. More information can be found in the online manual on: <http://www.ids-imaging.com>

Do not touch the printed circuit board while it is powered. Always hold the board by the edges to avoid the risk of electrostatic discharge damage.

### 1. Download the latest driver

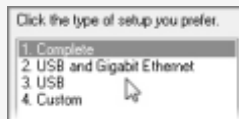
[www.ueyesetup.com](http://www.ueyesetup.com)

Please note that free registration or login is required to download IDS Software Suite.

You can download the latest software for your uEye® camera from [www.ueyesetup.com](http://www.ueyesetup.com). All files are packed in ZIP archives.

For a Windows installation you can choose the full software setup or the smaller "Drivers only" package.

### 2. Install the software



Extract the ZIP archive and start the setup (.exe file). You can now choose to install the complete software or define a customized setup.

Select "1. Complete" to install all drivers with demo applications and manuals.

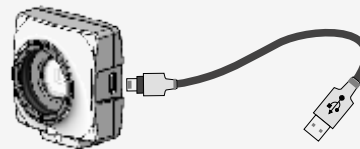
### System requirements

PC with Intel i3 or better  
Free USB 2.0 port (High Speed 480 Mbit/s)

Memory: min. 2 GB  
Disk space: min. 500 MB

Operating system:  
Windows 7 SP1/8/8.1/10 (32/64-bit)  
Linux > Kernel 2.6 (32/64-bit)

### 3. Connect the camera



On connection, the driver installation starts automatically (USB cable not included).

**Board-level version only:** Make sure to avoid mechanical or electrical damage of the printed circuit board or its connections.

The orange LED indicates power on.

### 4. Capture images



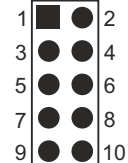
Software to operate your uEye® camera can be found via "Start > All Programs > IDS".

Use the **IDS Camera Manager** to configure all connected uEye® cameras.

With **uEye Cockpit** (Windows)/**uEye Demo** (Linux) you can change camera settings and capture and save images.

### Board-level version: 10-pin plated through holes

- 1 USB power supply (V<sub>cc</sub>) 5 V
- 2 USB ground (GND)
- 3 Trigger input without optocoupler (+)
- 4 Flash output without optocoupler (+)
- 5 Power supply (sensor-dependent)
- 6 USB ground (GND)
- 7 General purpose I/O (GPIO) 1
- 8 General purpose I/O (GPIO) 2
- 9 I<sup>2</sup>C bus clock signal
- 10 I<sup>2</sup>C bus data signal



### Intended use

IDS industrial cameras are to be used to capture images for visualization and image processing tasks.

### Safety instruction

- Read carefully the information in our online manual\* before installing and using the product.
- The producer is not responsible for damages and injury, which can occur due to false handling of the product and ignoring the safety instructions. All warranty will be spoiled in this case.
- If the product is modified or changed the CE, FCC and/or UL approval becomes invalid. In this case the customer is responsible for ensuring product conformity.
- This product is not a toy and should be kept and operated out of reach of children.
- Keep packaging material like films away from children. In case of abuse there is a risk of suffocation.
- Only operate the product under ambient conditions described in our online manual\* for each product.
- Before starting up, check if the electrical wiring corresponds to the specifications in our online manual\*.
- Lay cables in such way that no one can step on or they do not represent a trip hazard.
- The product is not authorized for use in security relevant applications. If it is used in security relevant applications, the customer is responsible for the necessary approvals.

\* <http://en.ids-imaging.com/manuals-ueye.html>